

How to Use Trillian

An Instant Messaging/Chat Program

Do you chat with AIM, ICQ, MSN, Yahoo Messenger or IRC? Trillian is a chat client that supports all of them! It supports features such as audio chat, file transfers, group chats, chat rooms, buddy icons, multiple simultaneous connections to the same network, server-side contact importing, typing notification, direct connection (AIM), proxy support, encrypted messaging (AIM/ICQ), SMS support, and privacy settings. You can use Trillian to chat with your friends, family, co-workers, or contact a GSLIS Lab Assistant with a technical question.

To use Trillian, you must first set up an instant messaging account through one of the following services:

AIM - http://www.aim.com/get_aim/win/latest_win.adp

ICQ - <http://www.icq.com/download/>

MSN - <http://imagine-msn.com/Messenger/Default2.aspx>

Yahoo Messenger - <http://messenger.yahoo.com/>

IRC - <http://www.mirc.com/index.html>

Using Trillian is easy!

You can find it on the computers in the GSLIS Tech Lab by clicking

Start -> All Programs -> Chat Software -> Trillian

If you would like to download it at home please visit <http://www.ceruleanstudios.com/>

To Begin:



Click on Add and enter a Username/Password.

Verify your password.

Enter your password again and click the Start button.

Choose Trillian Basic and follow the “Trillian First Time Wizard” to select an icon and the chat provider you wish to use.



Enter the Screen Name and Password you selected when you registered for a chat service and click “Next”.



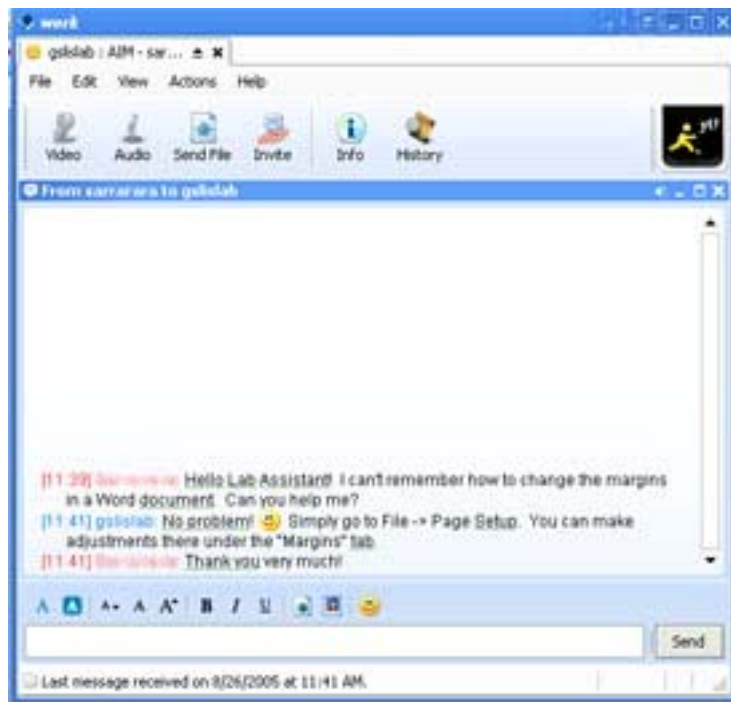
To add buddies:
Trillian Menu -> Add Contact or Group



Enter the Screen Name of the person you wish to add to your buddy list and click “Add”.

To send an Instant Message:

Double click on the Screen Name of the person you wish to send the message to. Type your message into the box and click “Send” or press “Enter”.



You can Instant Message the Lab Assistant with a technical question by adding GSLISLAB to your buddy list.

If you have any additional questions please ask the Lab Assistant, email us at gslslab@simmons.edu, Instant Message us at gslslab, or call (617) 521-2802.